

## COVID-19 Surveillance for Forsyth County as of April 17, 2021

**Table 1. Summary Statistics for Forsyth County, NC Total COVID-19 Cases as of April 17, 2021**

Total # of COVID-19 Cases		34,033
Gender*		
	Female	53.4%
	Male	46.6%
	Unknown <sup>1</sup>	0.0%
Age Group*		
	≤ 4 yrs	2.6%
	5-14yrs	6.3%
	15-24 yrs	19.9%
	25-34 yrs	16.6%
	35-44 yrs	15.1%
	45-54 yrs	14.4%
	55-64 yrs	11.8%
	65-74 yrs	7.0%
	75-84 yrs	3.9%
	85-94 yrs	2.2%
	≥95 yrs	0.3%
	Unknown <sup>1</sup>	0.0%
Race/Ethnicity*		
	Asian	1.4%
	Black, non-Hispanic/Latino	20.4%
	Hispanic/Latino	19.7%
	Native American	0.2%
	White, non-Hispanic/Latino	44.1%
	Unknown <sup>1</sup>	14.1%

Forsyth County Department of Public Health, Epidemiology & Surveillance Unit  
 Source: NC DHHS/NC COVID, April 19, 2021. Total # of Cases: 34,033 [RT-PCR: 31,003, Antigen: 3,030]

<sup>1</sup>Unknown cases: The provider did not complete the age and/or race/ethnicity section of the testing requests to authorized labs.

\*Totals may be off due to rounding

**As of April 17, 2021, 33,267 residents are presumed to have recovered.**

**Table 2. Zip Code Distribution of Forsyth County, NC Residents who Received a COVID-19 Lab Test as of April 17, 2021**

Zip Code <sup>1</sup>	Area	Estimated Pop. Count <sup>2</sup>	Reported Total # of Persons Tested <sup>3</sup>	Reported % of Pop who have been Tested	Reported Total # of Persons who Tested Positive <sup>3</sup>	Reported % of Pop who Tested Positive	Reported % of Pop who were Tested and had a Positive	Rate per 1,000 Pop for FC Pop who have been Tested	Rate per 1,000 Pop for FC Pop who Tested Positive
27009	Belews Creek	2,647	1,351	51.0%	260	9.8%	19.2%	510.4	98.2
27010	Bethania	359	127	35.4%	7	1.9%	5.5%	353.8	19.5
27012	Clemmons <sup>4</sup>	20,563	14,172	68.9%	2,075	10.1%	14.6%	689.2	100.9
27023	Lewisville <sup>4</sup>	13,999	7,347	52.5%	941	6.7%	12.8%	524.8	67.2
27040	Pfafftown <sup>4</sup>	10,893	6,768	62.1%	945	8.7%	14.0%	621.3	86.8
27045	Rural Hall <sup>4</sup>	3,216	5,573	173.3%	952	29.6%	17.1%	1,732.9	296.0
27050	Tobaccoville	2,680	1,687	62.9%	249	9.3%	14.8%	629.5	92.9
27051	Walkertown	5,150	4,196	81.5%	660	12.8%	15.7%	814.8	128.2
27101	Winston-Salem <sup>4</sup>	18,902	14,002	74.1%	1,766	9.3%	12.6%	740.8	93.4
27103	Winston-Salem <sup>4</sup>	33,208	22,586	68.0%	2,919	8.8%	12.9%	680.1	87.9
27104	Winston-Salem <sup>4</sup>	28,485	19,629	68.9%	2,408	8.5%	12.3%	689.1	84.5
27105	Winston-Salem <sup>4</sup>	39,569	23,707	59.9%	3,776	9.5%	15.9%	599.1	95.4
27106	Winston-Salem <sup>4</sup>	45,015	32,127	71.4%	4,142	9.2%	12.9%	713.7	92.0
27107	Winston-Salem <sup>4</sup>	46,963	19,626	41.8%	3,600	7.7%	18.3%	417.9	76.7
27127	Winston-Salem <sup>4</sup>	34,139	19,718	57.8%	3,257	9.5%	16.5%	577.6	95.4
27284	Kernersville <sup>4</sup>	51,136	26,165	51.2%	4,520	8.8%	17.3%	511.7	88.4
		356,924	218,781	61.3%	32,477	9.1%	14.8%	613.0	91.0

Forsyth County Department of Public Health, Epidemiology &amp; Surveillance Unit

Source: NC DHHS/NC COVID, April 19, 2021. Total # of Cases: 34,033 [RT-PCR: 31,003, Antigen: 3,030]

<sup>1</sup> Excludes areas of High Point, Germantown and King that are in Forsyth County<sup>2</sup> Estimated population counts for zip codes are from the Bureau of Census, Census Data by Zip Code. Except for Belews Creek (2012 population estimate), all other estimates are for 2018.<sup>3</sup> Differences in total number of residents who had a positive COVID-19 lab (1,556) and number of residents who received a COVID-19 lab test (15,894) are due to incomplete street addresses and/or zip codes that were omitted because the majority of their populations are in neighboring counties<sup>4</sup> Data from these zip codes should be used carefully because they include testing data from congregate living facilities' residents who may not have been included in the Bureau of Census' population estimate.**Table 3. Race/Ethnicity-specific Summary Statistics for Forsyth County, NC COVID-19 Positive Lab Results Based on Age Groups as of April 17, 2021\***

Race/Ethnicity/ Age Groups	Asian		Black, non-Hispanic/Latino		Hispanic/Latino		White, non-Hispanic/Latino		Unknown <sup>2</sup>		Total	
	Case Count	%	Case Count	%	Case Count	%	Case Count	%	Case Count	%	Case Count	%
≤14yrs	29	6.0%	598	8.6%	947	14.1%	1000	6.7%	454	9.3%	3,028	8.9%
15-24 yrs	103	21.4%	1,232	17.7%	1,510	22.5%	2,925	19.5%	996	20.4%	6,766	19.9%
25-34 yrs	95	19.8%	1,300	18.7%	1,178	17.5%	2,247	15.0%	819	16.7%	5,639	16.6%
35-44 yrs	95	19.8%	1,004	14.4%	1,411	21.0%	1,933	12.9%	705	14.4%	5,135	15.1%
45-54 yrs	85	17.7%	1,051	15.1%	970	14.4%	2,110	14.1%	700	14.3%	4,916	14.4%
55-64 yrs	44	9.1%	866	12.4%	439	6.5%	2,038	13.6%	617	12.6%	4,004	11.8%
≥65 yrs	30	6.2%	907	13.0%	252	3.8%	2,747	18.3%	596	12.2%	4,532	13.3%
Unknown					8	0.1%			5	0.1%	13	0.0%
<b>Total</b>	<b>481</b>	<b>100.0%</b>	<b>6,958</b>	<b>100.0%</b>	<b>6,715</b>	<b>100.0%</b>	<b>15,000</b>	<b>100.0%</b>	<b>4,892</b>	<b>100.0%</b>	<b>34,033</b>	<b>100.0%</b>

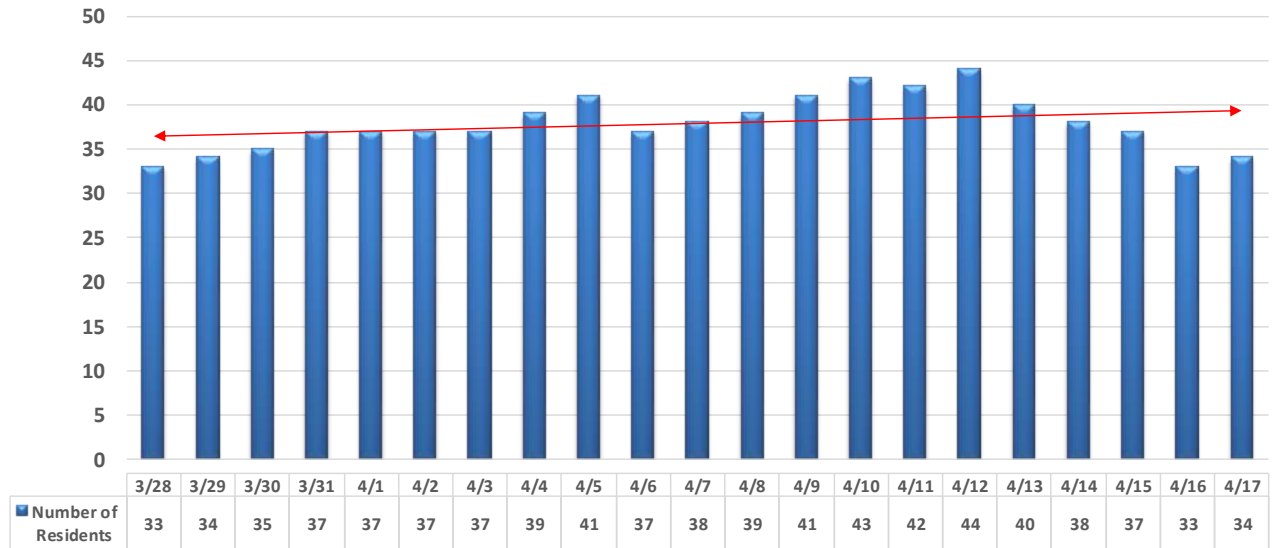
Forsyth County Department of Public Health, Epidemiology &amp; Surveillance Unit

Source: NC DHHS/NC COVID, April 19, 2021

<sup>1</sup> The Native American race/ethnicity-specific category is omitted because the case count in each age group is less than 20.<sup>2</sup> Unknown cases: The provider did not complete the age and/or race/ethnicity section of the testing requests to authorized laboratories.

\*Percentage(s) may be off due to rounding.

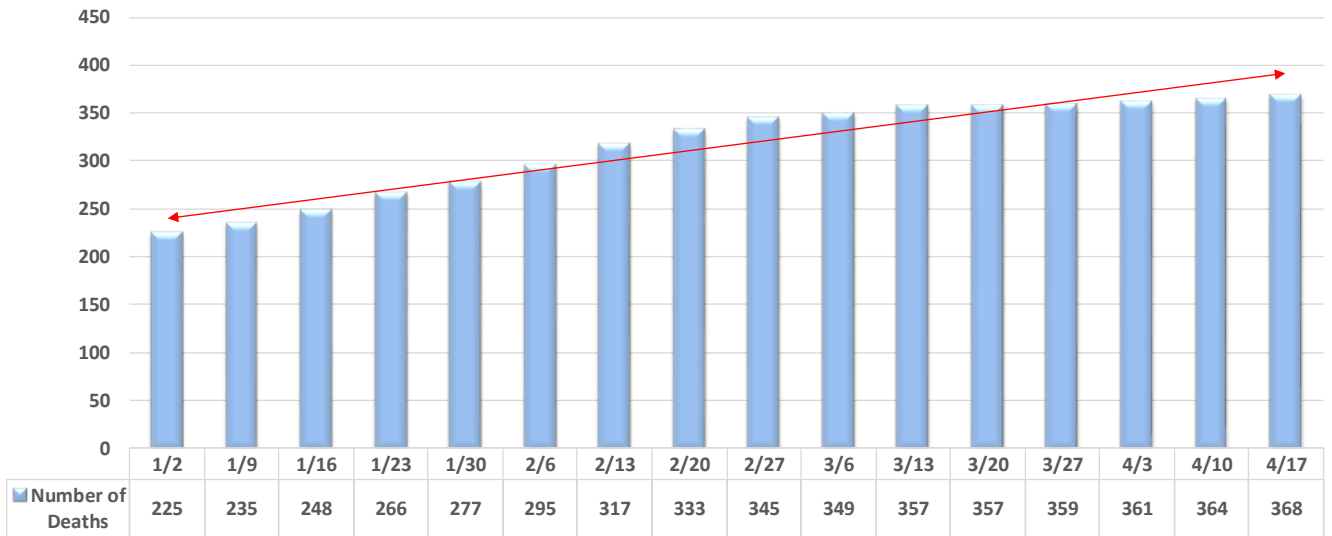
**Figure 1. Trend in the Reported Number of Forsyth County, NC Residents who are Hospitalized due to a COVID-19 Diagnosis as of April 17, 2021\***



\*Hospital numbers shown in this chart are from NCCOVID, and healthcare partners when provided

Forsyth County Department of Public Health, Epidemiology & Surveillance Unit

**Figure 2. Trend in the Number of Forsyth County, NC Resident Deaths due to COVID-19 as of April 17, 2021**



Forsyth County Department of Public Health, Epidemiology & Surveillance Unit

**Table 4. Summary Statistics for Forsyth County, NC Reported COVID-19 Resident Deaths as of April 17, 2021**

Total Number of FC COVID-19 Cases		34,033
<b>Total Number of Reported FC COVID-19 Resident Deaths</b>		<b>368</b>
Percentage of FC COVID-19 Cases that resulted in death		1.1%
<b>Gender</b>		
	Female	170
	Male	198
<b>Age Group</b>		
	≤ 4 yrs	0
	5-14yrs	0
	15-24 yrs	0
	25-34 yrs	2
	35-44 yrs	4
	45-54 yrs	15
	55-64 yrs	48
	65-74 yrs	69
	75-84 yrs	103
	85-94 yrs	107
	≥95 yrs	20
<b>Race/Ethnicity</b>		
	Asian	3
	Black, non-Hispanic/Latino	97
	Hispanic/Latino	26
	White, non-Hispanic/Latino	230
	<sup>1</sup> Unknown	12

Forsyth County Department of Public Health, Epidemiology & Surveillance Unit

Source: NC DHHS/NC COVID, April 19, 2021

<sup>1</sup>Unknown cases: The provider did not complete the age and/or race/ethnicity section of the testing requests to authorized labs.

**Table 5. Confirmed COVID-19 Cases per 100,000 Population for Forsyth County, Peer Counties & North Carolina as of April 17, 2021**

Jurisdiction	Case Count	Rate <sup>1</sup>
Forsyth	34,033	8,902.3
Durham	24,050	7,480.8
Guilford	44,926	8,363.4
Mecklenburg	106,736	9,612.8
Wake	83,767	7,534.6
North Carolina	943,693	8,997.8

Forsyth County Department of Public Health, Epidemiology & Surveillance Unit

Source: NC DHHS/NC COVID, April 17, 2021

<sup>1</sup>Rate is per 100,000 population (July 1, 2019 population estimate)

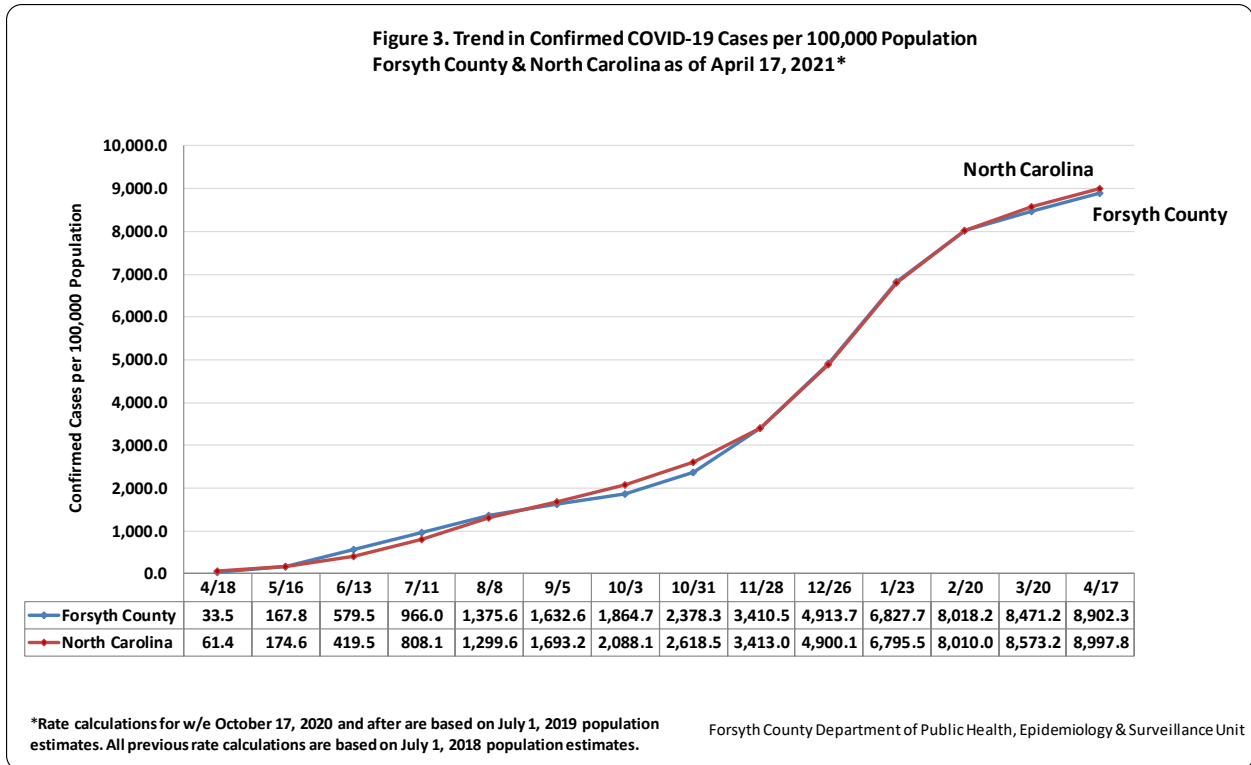
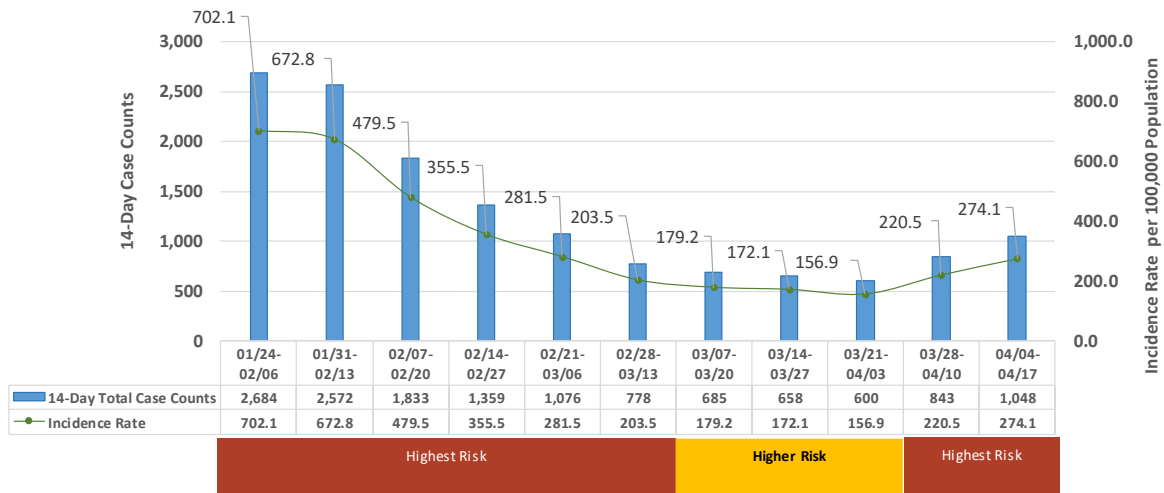


Table 6

Indicators	Lowest risk of transmission in schools	Lower risk of transmission in schools	Moderate risk of transmission in schools	Higher risk of transmission in schools	Highest risk of transmission in schools
<b>Core Indicators</b>					
Number of new cases per 100,000 persons within the last 14 days*	<5	5 to <20	20 to <50	50 to ≤ 200	>200
Percentage of RT-PCR tests that are positive during the last 14 days**	<3%	3% to <5%	5% to <8%	8% to ≤ 10%	>10%
Ability of the school to implement 5 key mitigation strategies: <ul style="list-style-type: none"> <li>• Consistent and correct use of masks</li> <li>• Social distancing to the largest extent possible</li> <li>• Hand hygiene and respiratory etiquette</li> <li>• Cleaning and disinfection</li> <li>• <a href="#">Contact tracing</a> in collaboration with local health department</li> </ul> Schools should adopt the additional mitigation measures outlined below to the extent possible, practical and feasible.	Implemented <b>all 5</b> strategies correctly and consistently	Implemented <b>all 5</b> strategies correctly but inconsistently	Implemented <b>3-4</b> strategies correctly and consistently	Implemented <b>1-2</b> strategies correctly and consistently	Implemented <b>no</b> strategies

Important note: All three indicators should be incorporated to inform decisions. Regardless of what the first two indicators determine, it is critical to ensure the use and integration of mitigation strategies. Based on current WSFC school system practices, all 5 mitigation strategies are in place.

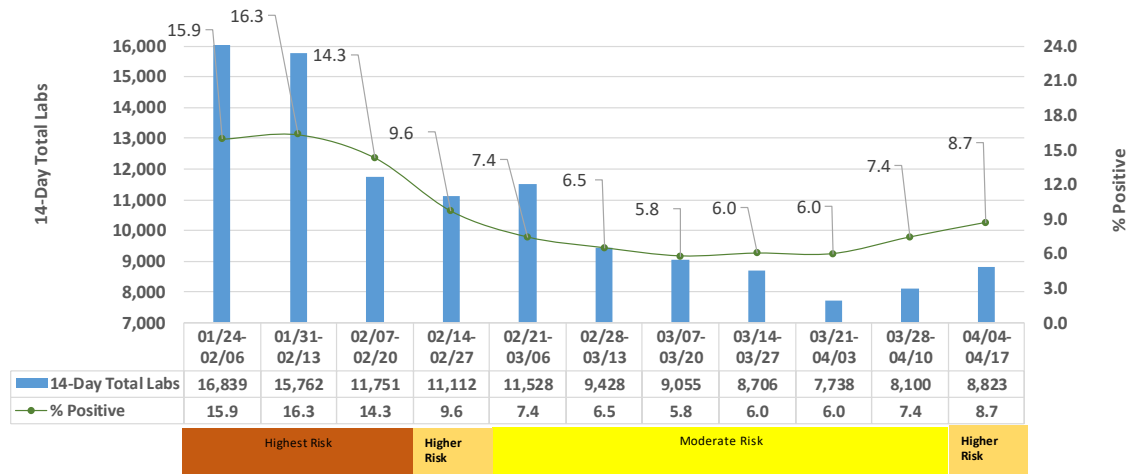
Figure 4. Number of New Cases per 100,000 Population During the Last 14 Days, Forsyth County, NC\*



\*Calculated by adding the number of new cases for residents in the county in the last 14 days, then dividing by the 2019 county population estimate (382,295), and then multiplying by 100,000.  
Data Source: NC DHHS, NC COVID, April 19, 2021

Important note: All three indicators should be incorporated to inform decisions. Regardless of what the first two indicators determine, it is critical to ensure the use and integration of mitigation strategies. Based on current WSFC school system practices, all 5 mitigation strategies are in place.

Figure 5. Percentage of Tests that are Positive During the Last 14 Days, Forsyth County, NC\*



\*% Positive: Calculated by adding the number of new RT-PCR Cases for county residents in the last 14 days, and dividing by total number of new RT-PCR labs for county residents in the last 14 days, and then multiplying by 100.  
Data Source: NC DHHS, NC COVID, April 19, 2021

Important note: All three indicators should be incorporated to inform decisions. Regardless of what the first two indicators determine, it is critical to ensure the use and integration of mitigation strategies. Based on current WSFC school system practices, all 5 mitigation strategies are in place.