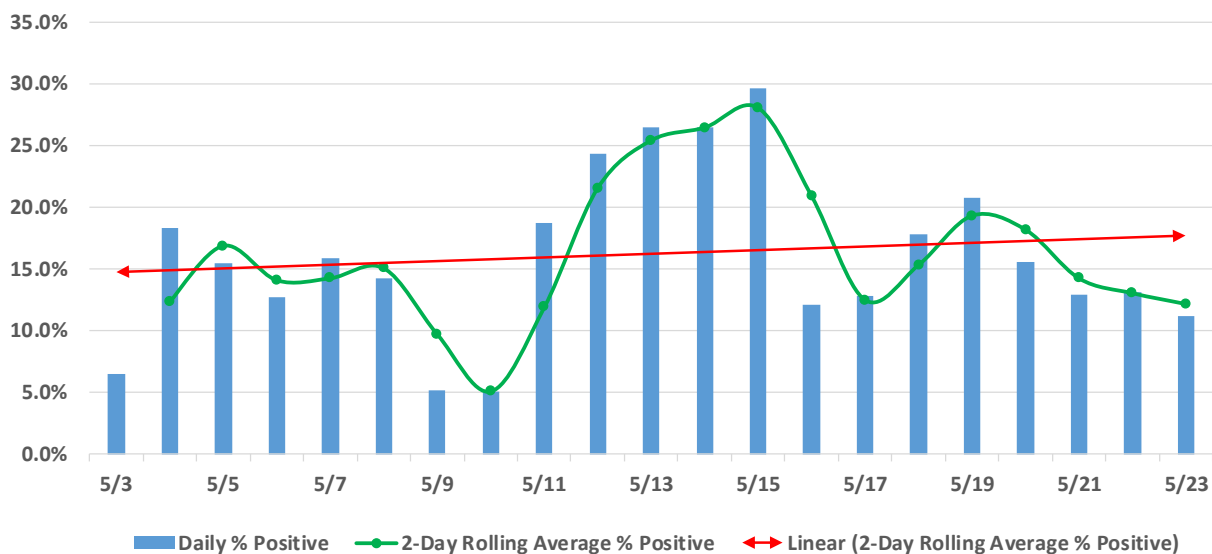




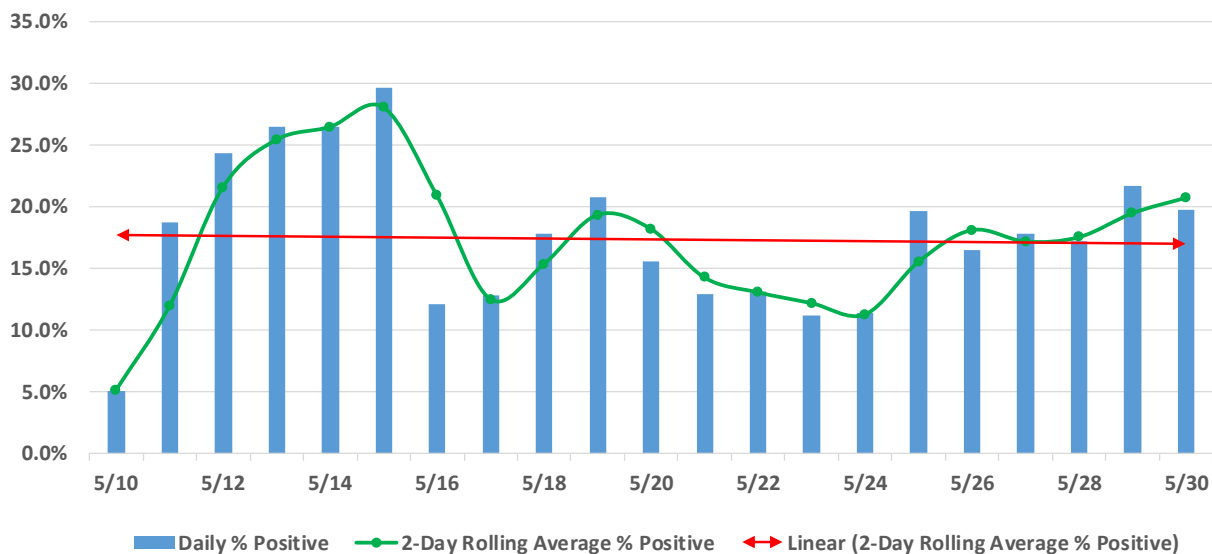
Forsyth County, NC
COVID-19 2-Day Rolling Average % Positive
May 3, 2020 to September 5, 2020

Figure 1. Forsyth County, NC COVID-19 2-Day Rolling Average % Positive
May 3, 2020 to May 23, 2020



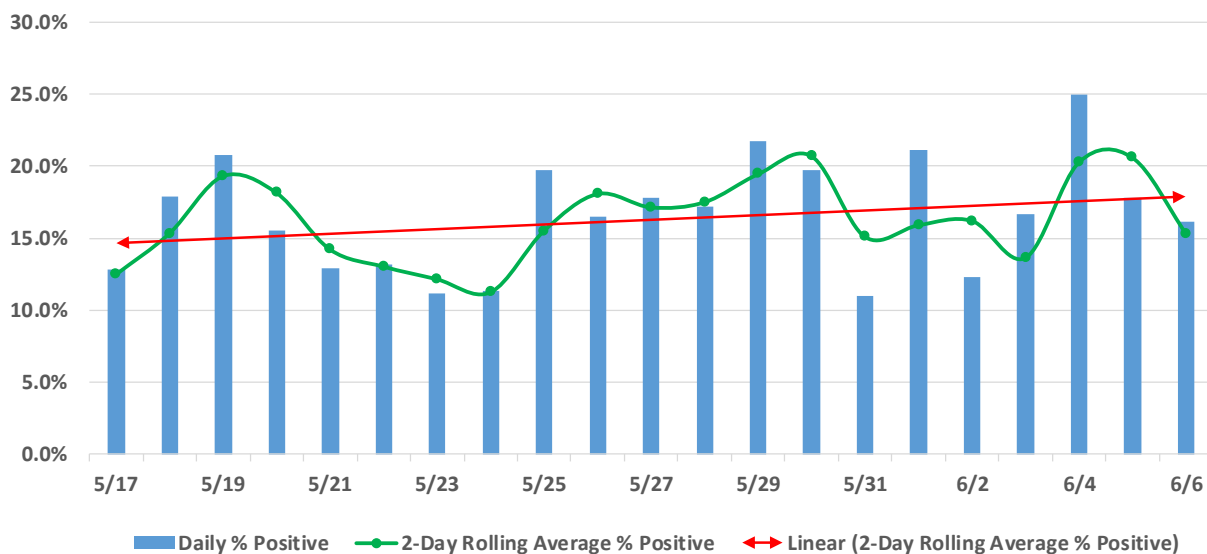
Forsyth County Department of Public Health, Epidemiology & Surveillance Unit

Figure 2. Forsyth County, NC COVID-19 2-Day Rolling Average % Positive
May 10, 2020 to May 30, 2020



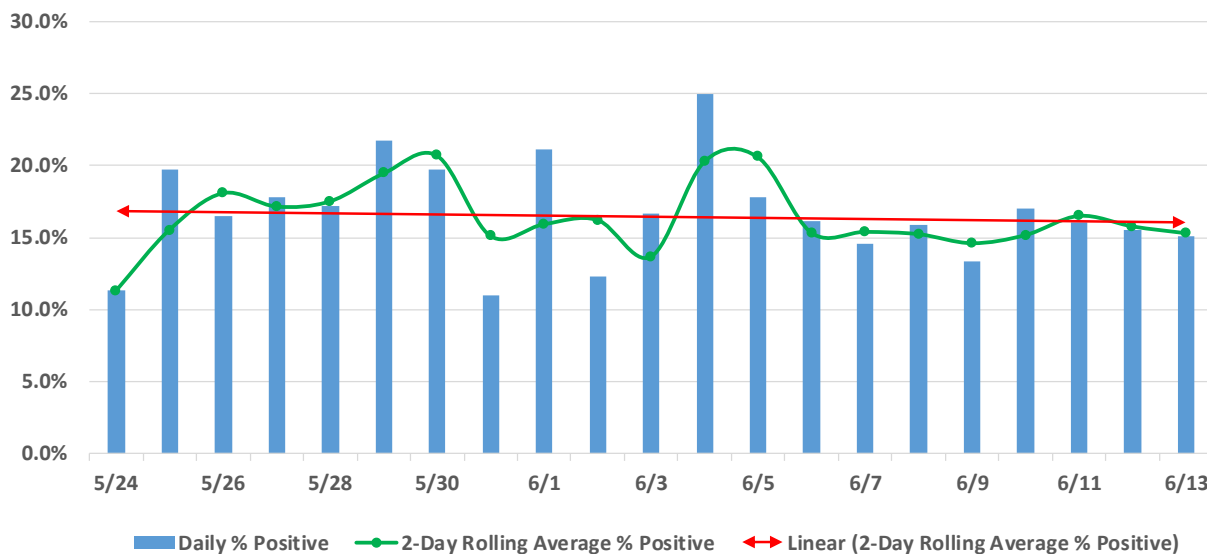
Forsyth County Department of Public Health, Epidemiology & Surveillance Unit

Figure 3. Forsyth County, NC COVID-19 2-Day Rolling Average % Positive
May 17, 2020 to June 6, 2020



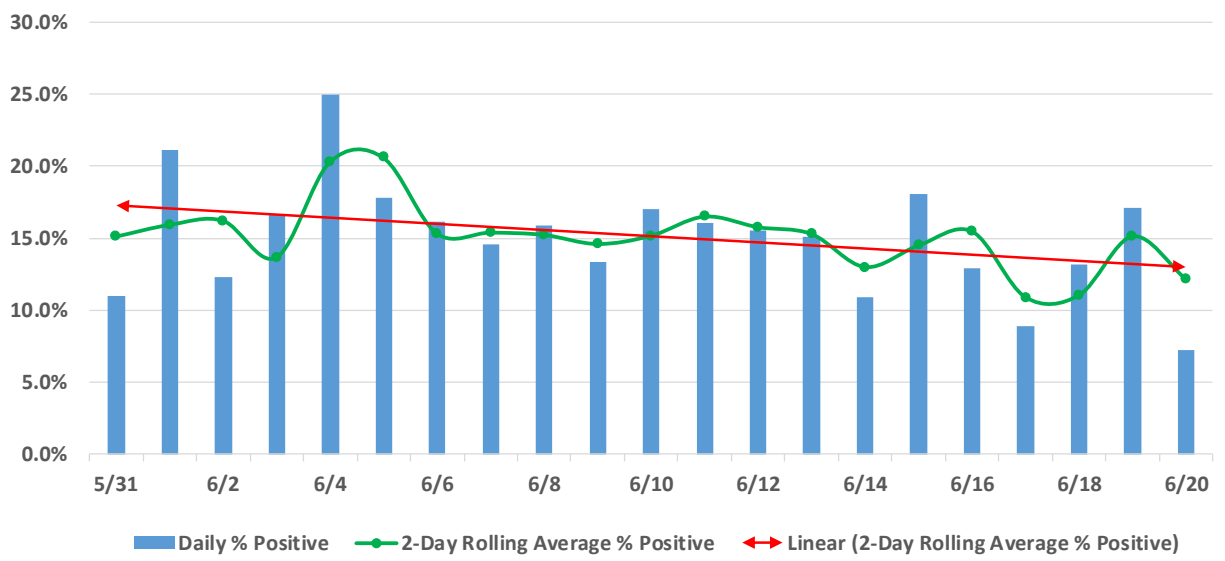
Forsyth County Department of Public Health, Epidemiology & Surveillance Unit

Figure 4. Forsyth County, NC COVID-19 2-Day Rolling Average % Positive
May 24, 2020 to June 13, 2020



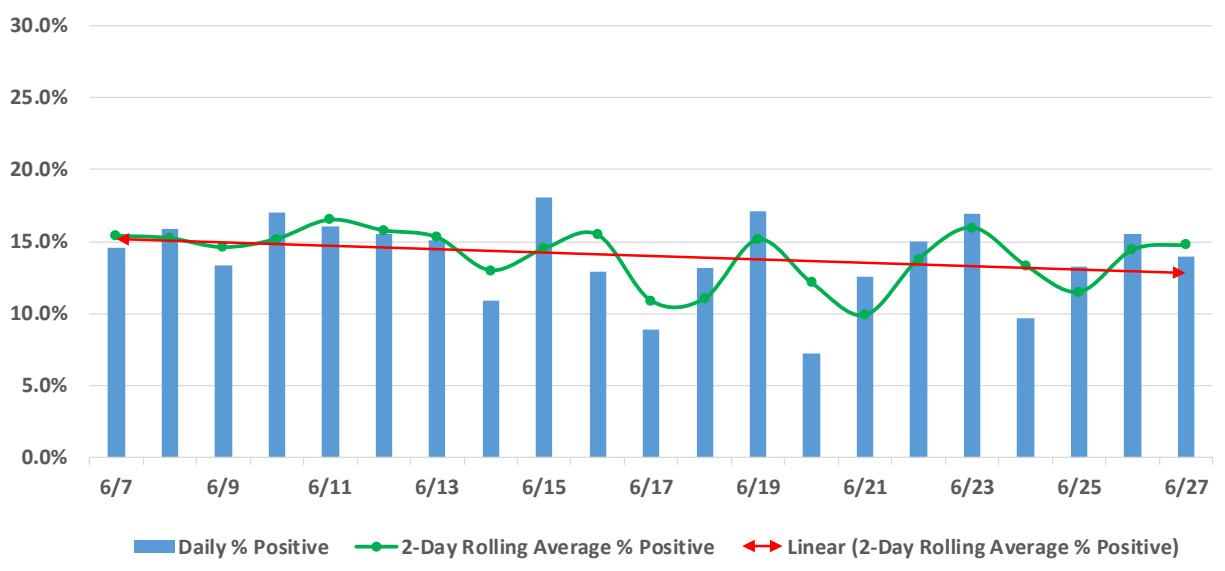
Forsyth County Department of Public Health, Epidemiology & Surveillance Unit

Figure 5. Forsyth County, NC COVID-19 2-Day Rolling Average % Positive
May 31, 2020 to June 20, 2020



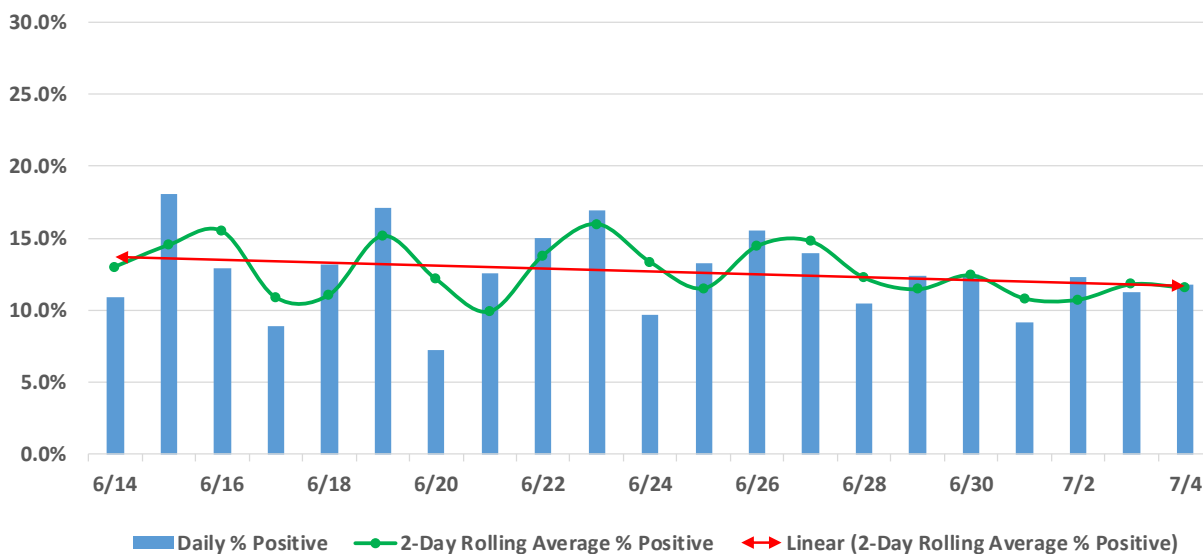
Forsyth County Department of Public Health, Epidemiology & Surveillance Unit

Figure 6. Forsyth County, NC COVID-19 2-Day Rolling Average % Positive
June 7, 2020 to June 27, 2020



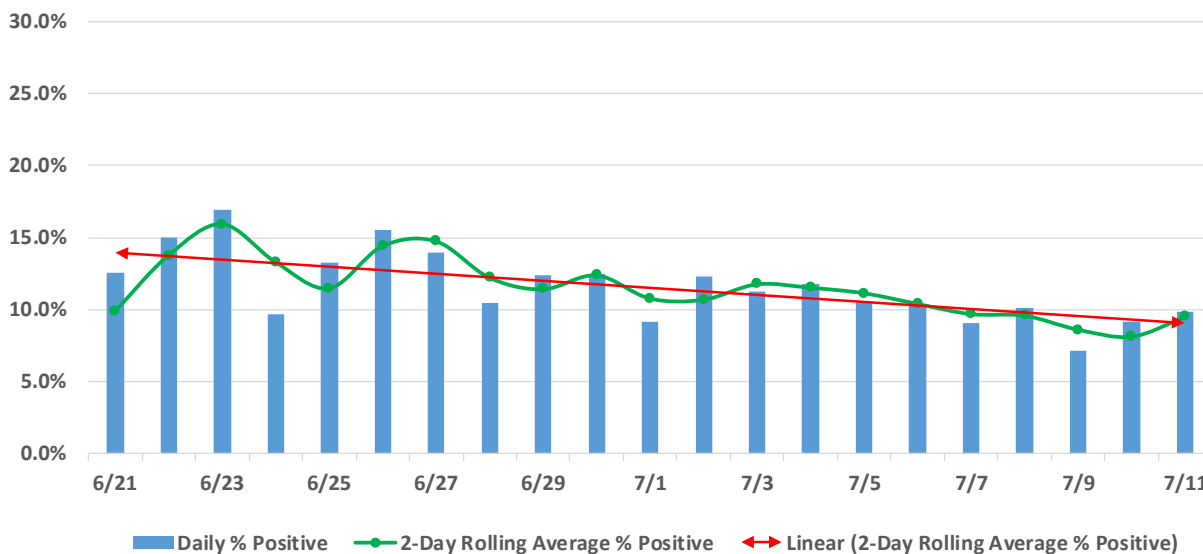
Forsyth County Department of Public Health, Epidemiology & Surveillance Unit

Figure 7. Forsyth County, NC COVID-19 2-Day Rolling Average % Positive
June 14, 2020 to July 4, 2020



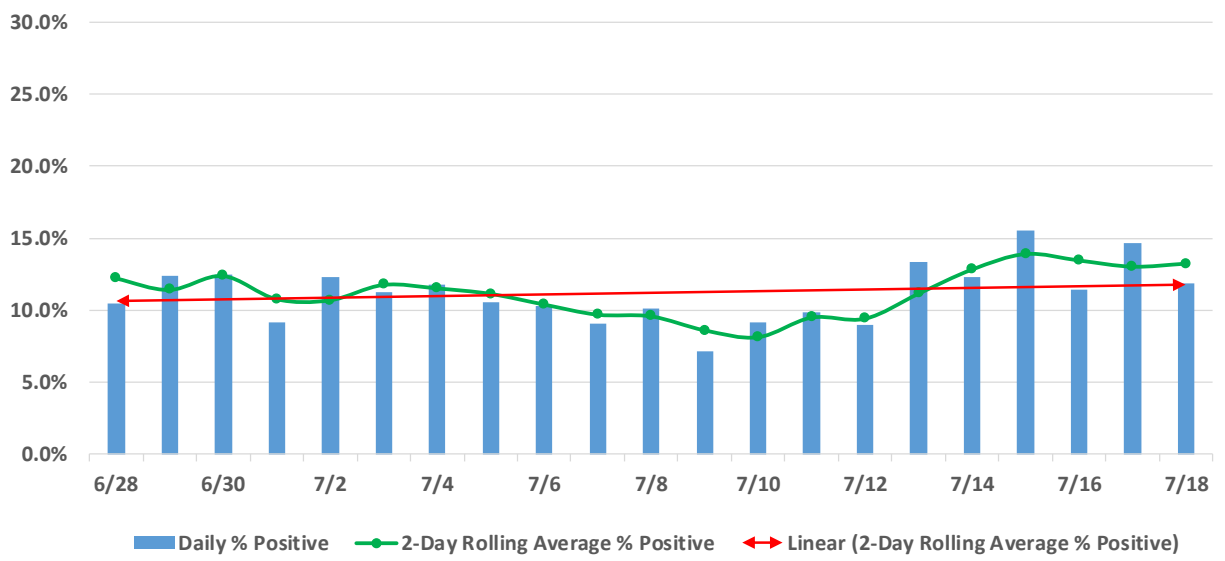
Forsyth County Department of Public Health, Epidemiology & Surveillance Unit

Figure 8. Forsyth County, NC COVID-19 2-Day Rolling Average % Positive
June 21, 2020 to July 11, 2020



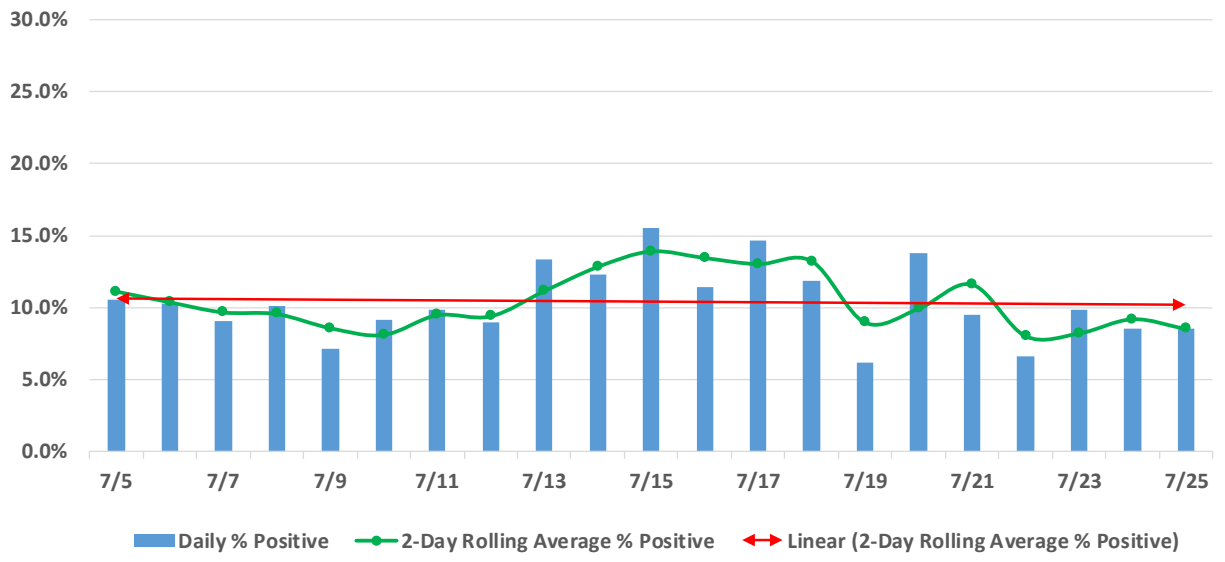
Forsyth County Department of Public Health, Epidemiology & Surveillance Unit

Figure 9. Forsyth County, NC COVID-19 2-Day Rolling Average % Positive
June 28, 2020 to July 18, 2020



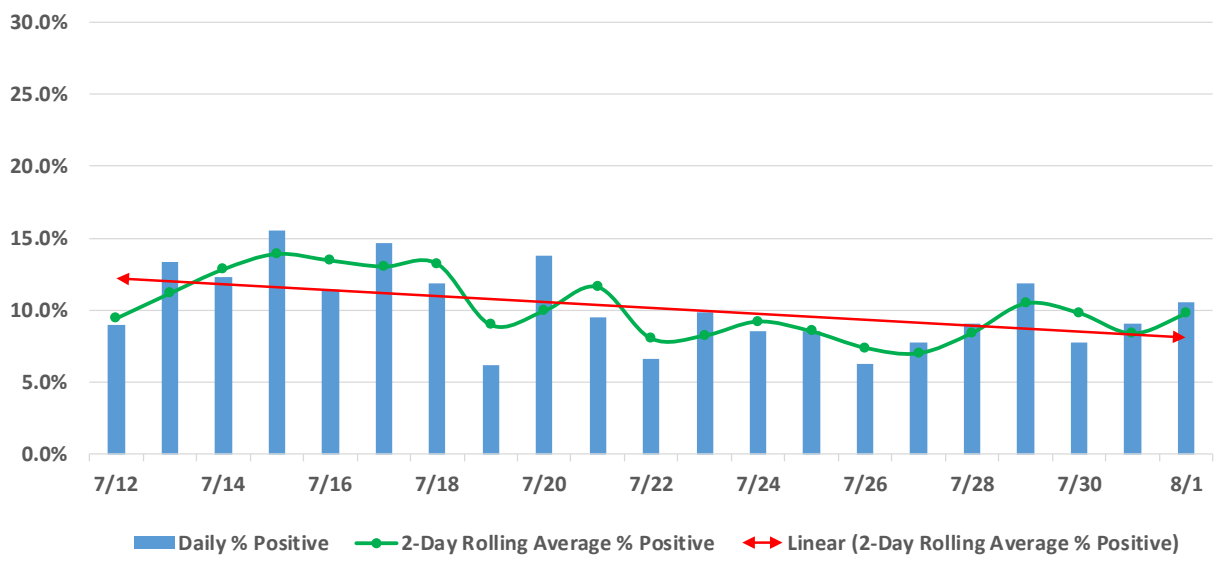
Forsyth County Department of Public Health, Epidemiology & Surveillance Unit

Figure 10. Forsyth County, NC COVID-19 2-Day Rolling Average % Positive
July 5, 2020 to July 25, 2020



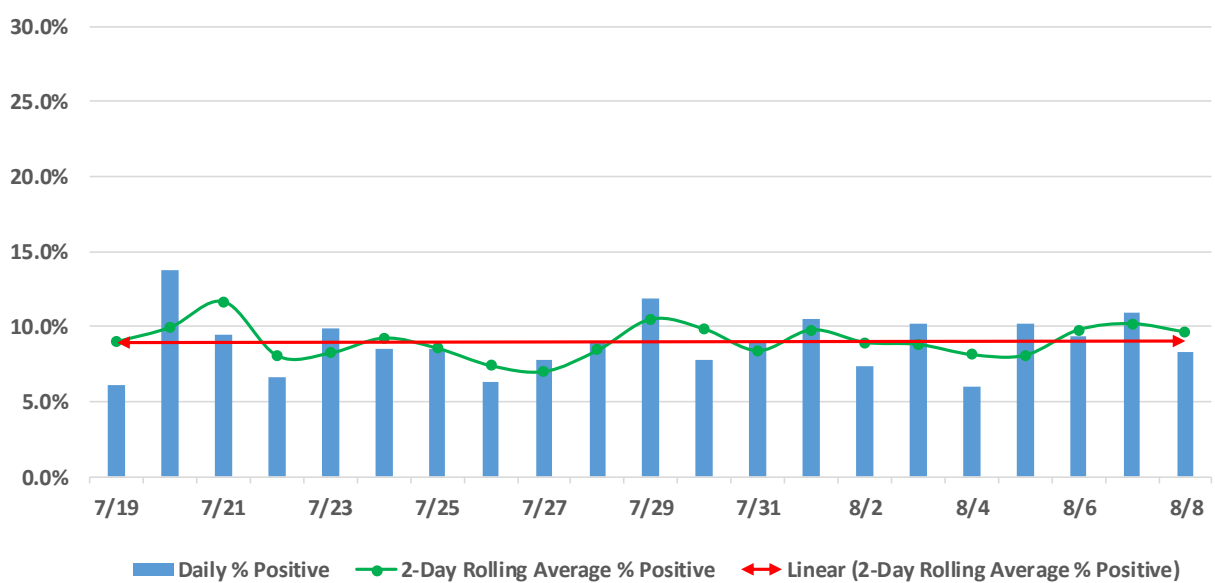
Forsyth County Department of Public Health, Epidemiology & Surveillance Unit

Figure 11. Forsyth County, NC COVID-19 2-Day Rolling Average % Positive
July 12, 2020 to August 1, 2020



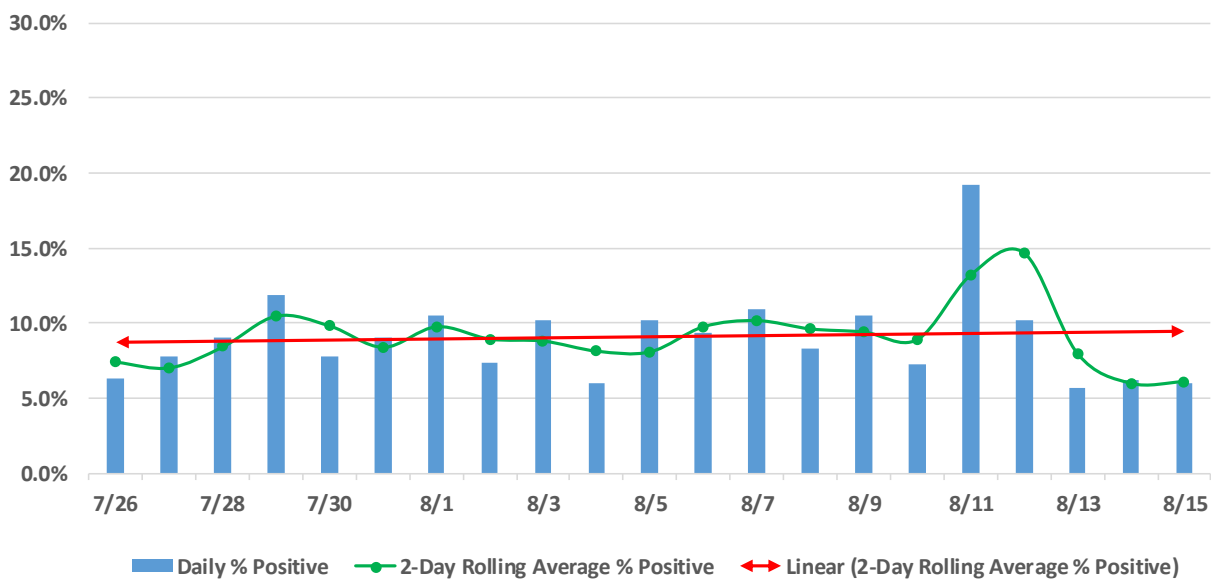
Forsyth County Department of Public Health, Epidemiology & Surveillance Unit

Figure 12. Forsyth County, NC COVID-19 2-Day Rolling Average % Positive
July 19, 2020 to August 8, 2020



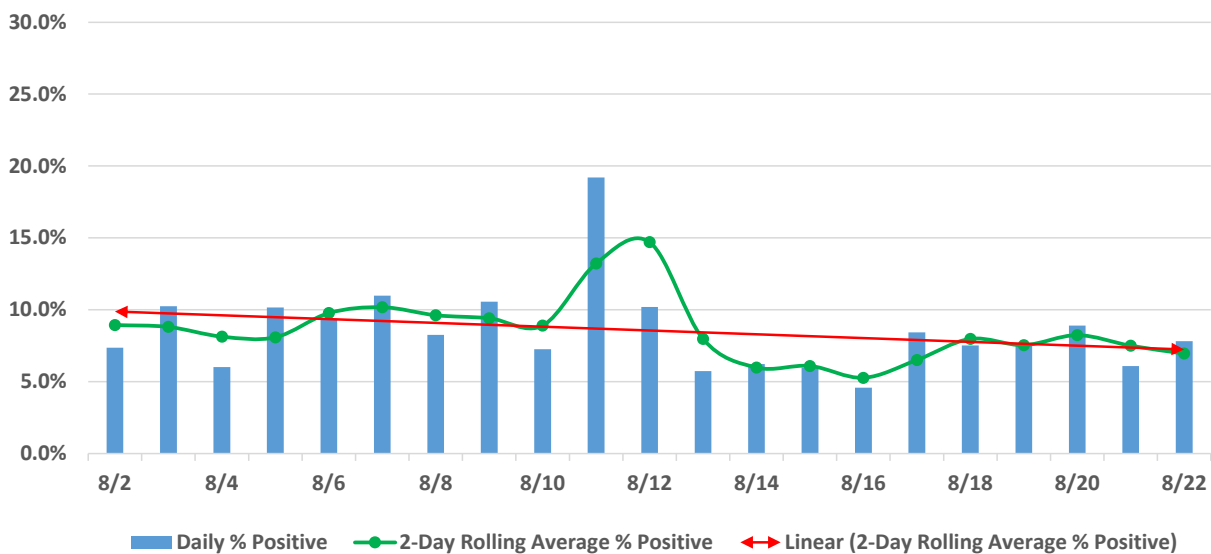
Forsyth County Department of Public Health, Epidemiology & Surveillance Unit

Figure 13. Forsyth County, NC COVID-19 2-Day Rolling Average % Positive
July 26, 2020 to August 15, 2020



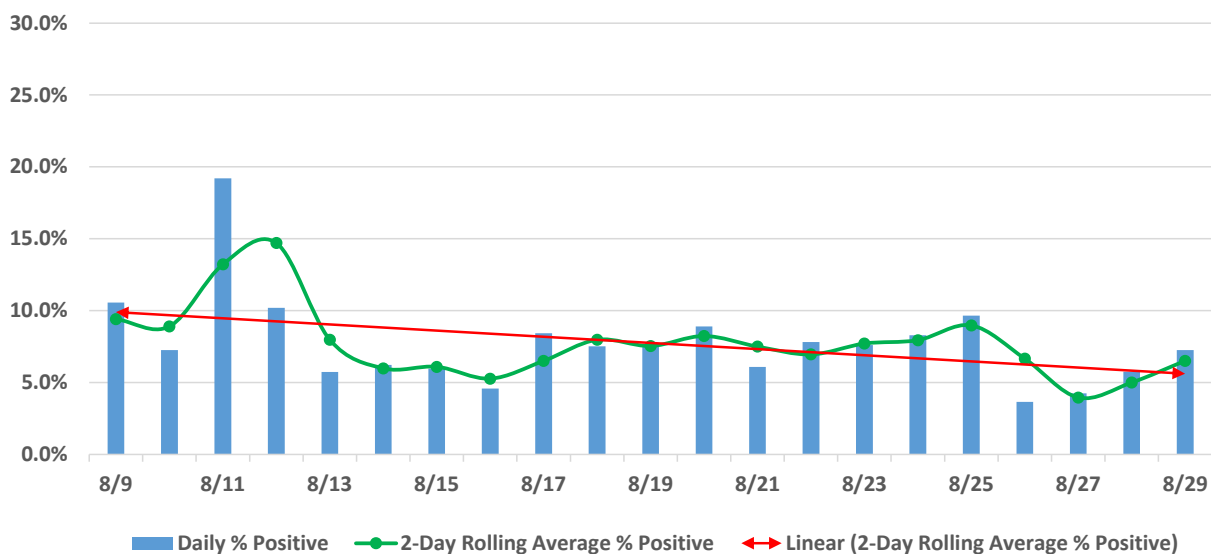
Forsyth County Department of Public Health, Epidemiology & Surveillance Unit

Figure 14. Forsyth County, NC COVID-19 2-Day Rolling Average % Positive
August 2, 2020 to August 22, 2020



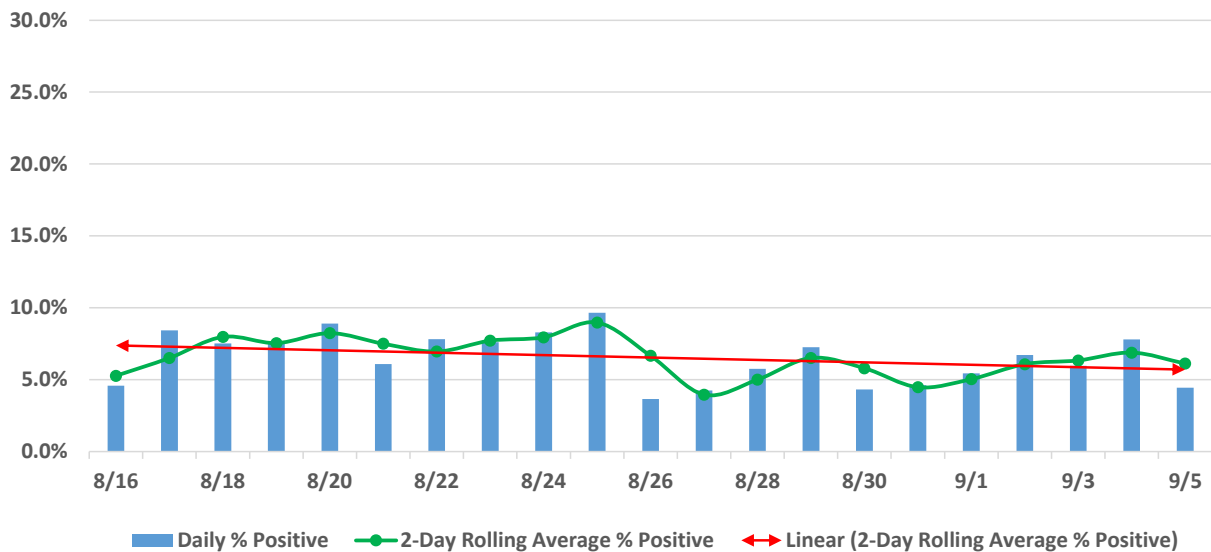
Forsyth County Department of Public Health, Epidemiology & Surveillance Unit

Figure 15. Forsyth County, NC COVID-19 2-Day Rolling Average % Positive
August 9, 2020 to August 29, 2020



Forsyth County Department of Public Health, Epidemiology & Surveillance Unit

Figure 16. Forsyth County, NC COVID-19 2-Day Rolling Average % Positive
August 16, 2020 to September 5, 2020



Forsyth County Department of Public Health, Epidemiology & Surveillance Unit